

SPACE-AGE TOY

WARNER BENSON





FIRST STEP in assembling the model missile is to lay out the parts on the table, and check against the instructions. Construction is simple, parts are few, only glue and paint required. Lamp cord is needed for firing.

CHILDREN'S TOYS reflect the age in which they live. Not too many years ago youngsters built model airplanes to emulate the daring men that flew in the skies overhead. Today we are in the age of missiles, and man is reaching into space with fiery projectiles. To keep pace, toys must reach the sky, at least, and be propelled by rocket fuel. This can mean trouble if youngsters make homemade rockets and try to power them with concoctions of gunpowder and other explosives. Even adults do not have the scientific know-how to safely handle such dangerous toys. But now there is an answer. A safe one.

The toy is called a Rock-A-Chute, and it's a scale-model of the type of missile used to explore space. It is propelled by a rocket motor of solid fuel and is so designed that at the top of its trajectory it releases its nose cone and ejects a parachute that drops the unit safely back to earth. The nose cone is soft rubber, for safety in handling, and the solid-fuel engine cannot be fired except by a 6- or 12-volt battery.

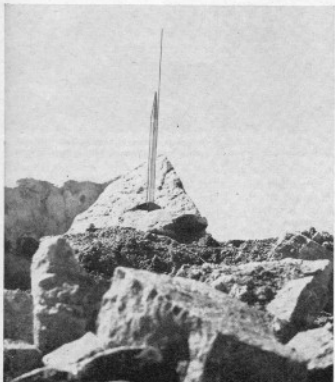
To be absolutely sure of this space-age toy, a kit was obtained, a 13-year-old boy assembled it and the completed rocket was fired under adult supervision. An automobile bat-



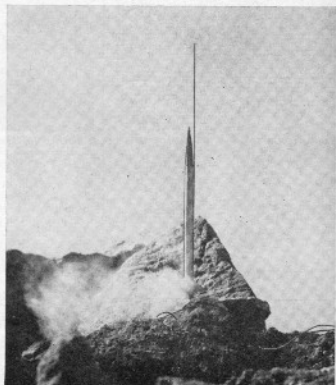
FINS ARE CEMENTED to rocket body, as is launching lug and long rubber band that acts as shock absorber for ejected parachute. Launching stand is assembled, deflection plate nailed to it, parachute tied to rubber band.

tery was used for the firing. The car was driven onto a large, open field leads were run from the battery and the rocket was fired. There was no flame, no problem, no worrisome incidents. Dad had as much fun as the youngster.

The Arcon Rock-A-Chute kit consists of only a few parts, and no trouble was encountered by the youngster in assembling the model rocket. All stress points at the fins and along the launching lug were given double coats of fast-drying cement. The launching stand, consisting of two strips of wood and a telescoping wire, went together easily. In the original



ROCKET STANDS POISED on barren rock, wires clipped to motor igniter and lead off to battery of car. Last-minute check is made to be sure launching area is cleared of all personnel. Launching will be authentic, and safe.



"FIVE, four, three, two, one, ZERO." Wires are touched to car battery, a puff of smoke flares from the tail of the missile and it trembles momentarily on the launcher, eager to leap up into the welcoming blue sky.

