

HAPPY BIRTHDAY

August 9
Bill Prather

August 10
Sheila Rodarmel
Karen Strandberg

August 11
Kim Davis

August 14
Pat Casey
Harry Smoot

August 15
Verdina Trautman

August 16
Martha Schumacher

August 17
Sarah Locke

August 18
Barbara Lippis
Lou McWilliams

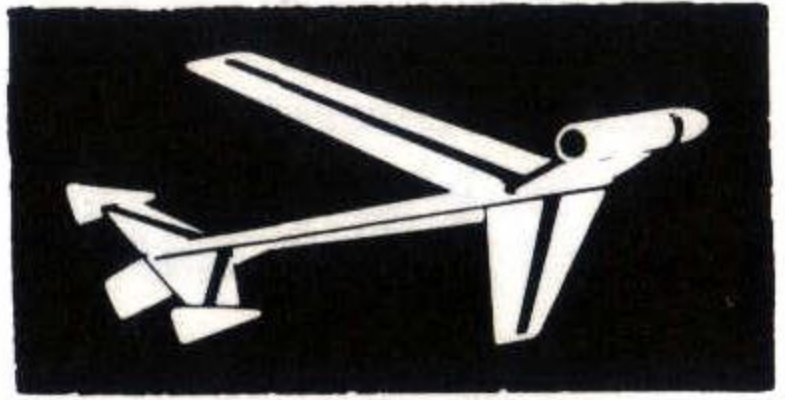
August 19
Gayl Higgins

August 20
Venita Daniel
Verna McCallister
Theresa Godinez

VOICES FROM THE PAST



Have you ever wondered what kind of mail we receive from "little boys" around the country? Here are some excerpts from some of our better ones: "Please repair your error!" "I recently haven't got my three rocket engines." "I understand that it is possible to loose orders of such and that is why I have produced so much patience." "When I ordered your Astron Space Plane they went me 1 screw short." "I'm real sorry if I caused you any hardness." "It makes me very sorry to tell you that I am not very happy with your service. It seems that twice there was something wrong with your service." "Dear who ever it may concern." "Your firm customer." "I hope this will meat your approval." "I was mission a small adpter set, cod you plase sand me a one."



CLASSIFIEDS

A Free Service
For Employees

Deadline: Tuesday Noon
Before Publication of the Launch Pad

FOR SALE: 1966 Corvair Monza,
1961 Buick LeSabre Convertible.
Both in good running condition.
Call Bill Simon at 784-6271.

THE LAUNCH PAD
published bi-weekly
by
ESTES INDUSTRIES
Penrose, Colorado

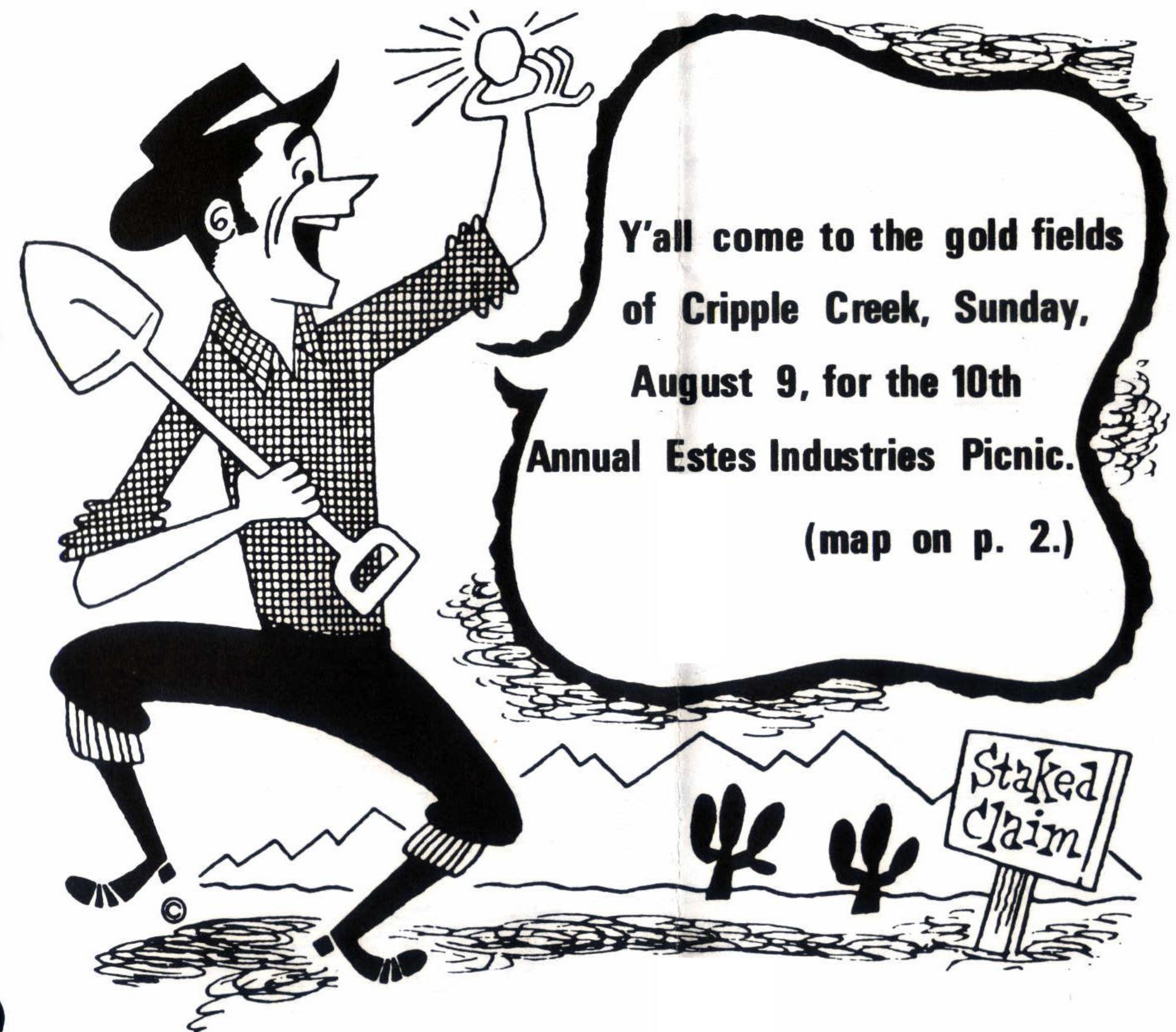
From the December 1, 1967 issue of the Launch Pad.



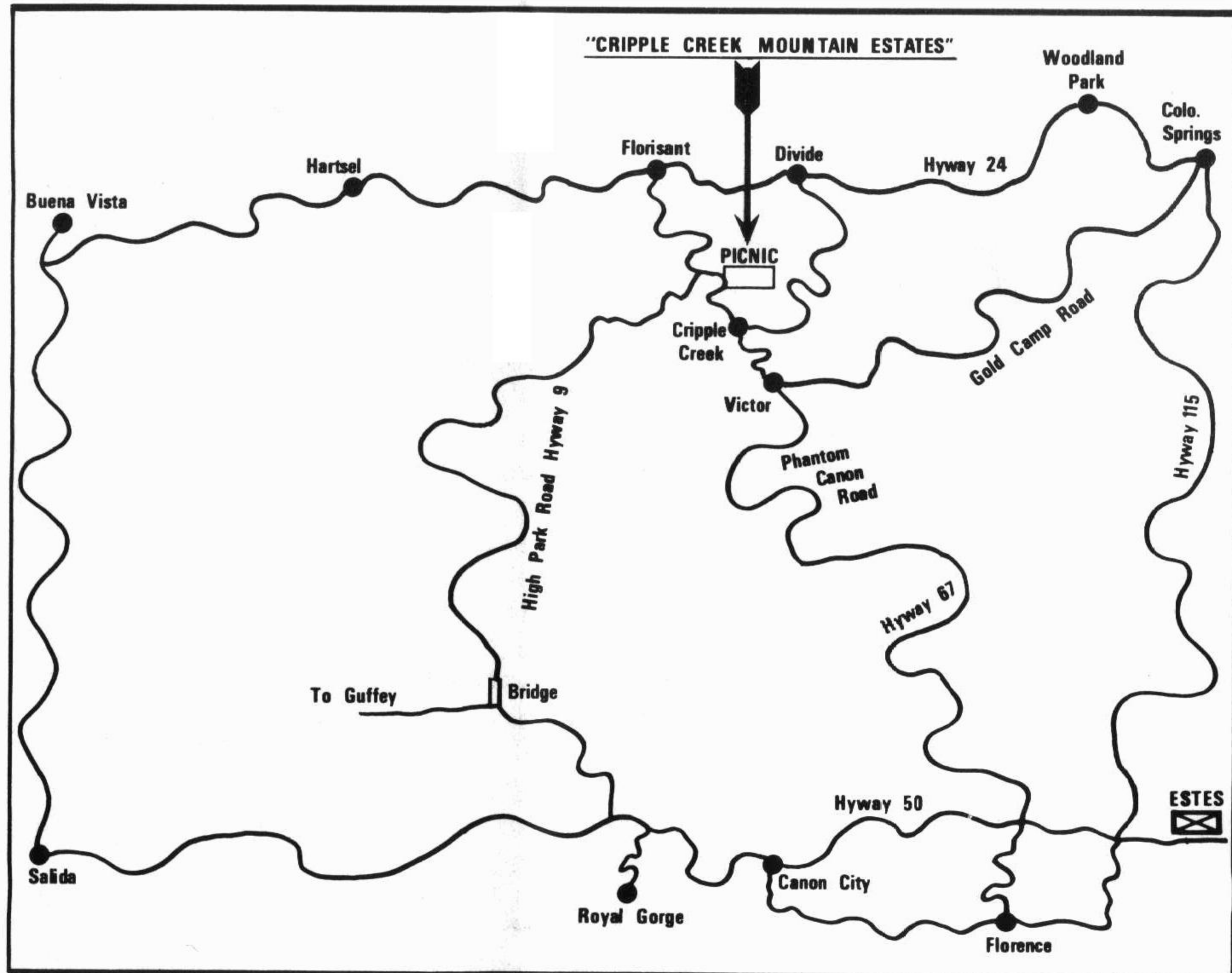
A SUBSIDIARY OF DAMON

LAUNCH PAD

August 7, 1970



Y'all come to the gold fields of Cripple Creek, Sunday, August 9, for the 10th Annual Estes Industries Picnic.
(map on p. 2.)



"FROM ESTES INDUSTRIES" TO "CRIPPLE CREEK MOUNTAIN ESTATES"

	<u>APPROXIMATE</u>	<u>APPROXIMATE</u>
Via - Phantom Canyon Road	- 45 Miles	- 60 to 75 Minutes
Via - High Park Road	- 60 Miles	- 75 to 90 Minutes
Via - Colo. Springs-Crip. Creek	- 80 Miles	- 105 to 120 Minutes
Via - Colo. Springs-Florissant	- 90 Miles	- 115 to 130 Minutes
Via - Colo. Springs-Goldcamp Rd.	- 75 Miles	- 105 to 129 Minutes

"Watch For Signs"



LETS HAVE A PICNIC

When someone talks about a picnic, do you picture a hot day, hamburgers and plenty of ants? The 10th Annual Estes Industries family picnic is going to be different. It will be held this Sunday, August 9, from 1 p.m. to 5 p.m. The site is near Cripple Creek, one of the richest gold mining camps in the Old West. Reserved for us by Dan Mathis, the Accounting Manager, the forested mountainsides will provide a cool, fun-filled location for the annual get-together.

Food is always the major interest at a picnic. For the main dish, the best barbequed beef and chicken in southern Colorado will be furnished. Vegetables, salads and rich desserts of every description will complete the menu. There will also be plenty of soft drinks. Don't worry about paper plates eating utensils or napkins, they will all be provided. Eatin' time is set for 3:00 p.m.

To help the entire family develop a huge appetite, games and activities will begin at 1:00 p.m. Horses for riding and guided tours through the mountain wilderness will be

available FREE OF CHARGE to all the Estes picnickers. Fishing, volleyball, horseshoe contests and baseball add to the fun of the afternoon. Organized games and contests will also be held for the younger children.

In addition to these activities, we may take a step back into history with a stage coach ride, also provided for our enjoyment. For those wishing to pan for gold like the old timers did, perhaps the nearby streams will yield a bit of their golden riches. All that's required is a large flat pan and some luck!

What do you bring? Just yourself, the entire family and the side dish which you indicated on the list posted in your department. You can also bring your own horses if you wish and a fishing pole for those trout filled lakes. For those of you who may not be familiar with the area four miles northwest of Cripple Creek, the sketched map will take you safely to the picnic area. See you there.

GALLEY SERVICE REORGANIZED

Avis Capraro and the Galley crew are celebrating their first full month at Estes Industries. The service has been good, but Avis isn't satisfied. She is streamlining her service for all the Estes employees. A system of written orders is being initiated to help make the venture more successful.

Starting Monday, August 10, each employee ordering a meal from the Galley will fill out an order form. These forms, along with your money envelope, will be turned in to the assigned "caller" and taken to Avis. Orders for the first shift need to be turned in by 10:30 a.m.; the second shift orders should be in by 6:30 p.m.; and the third shift orders

should be in by 1:30 a.m. Individuals without an assigned "caller" can give their orders to the receptionist at the front desk.

The order forms may be picked up from each shift supervisor or from the receptionist. All questions you might have can be answered by calling Deby Mahoney at ext. 220.

Oops, our mistake. The Launch Pad staff neglected to give credit to Frank Genty, Director of Information Services, for the article "Visitors Galore" printed in the last Launch Pad. Thank you, Frank, for an interesting contribution to the paper.

AUGUST ANNIVERSARIES

ONE YEAR

Bill Holmes
Alma Swift
Rick Robinson
John Merrill
John Simmance
Yolanda Garcia
Connie Fowler
Don Heberly
Mary Breedlove
Virginia Moore
Charlotte Erickson
Margaret Payne
Bill Schweighauser
Dianna Bush
Ramona Knighton

Engine Manufacturing
Shipping
Model Building
Engine Manufacturing
Model Development
Wood Shop
Mail Processing
Production
Shipping
Special Manufacturing
Print Shop
Visual Graphics
Engine Manufacturing
Mail Processing
Wood Shop

THREE YEARS

Chuck Helsel
Harriette Hinkle
Mabel Davidson
Irene Breece
Les Shaefer

Personnel
Shipping
Shipping
Kit Packing
Custodial

SEVEN YEARS

Roy Burns

Machine Shop

wedding

Sharon Green, secretary to the Personnel Director, will be married to Mack Eppler, of the Electronics Department Saturday, August 15 at 6:30 p.m. in the First Southern Baptist Church of Canon City. Your attendance is requested. A reception will follow in the church parlor.



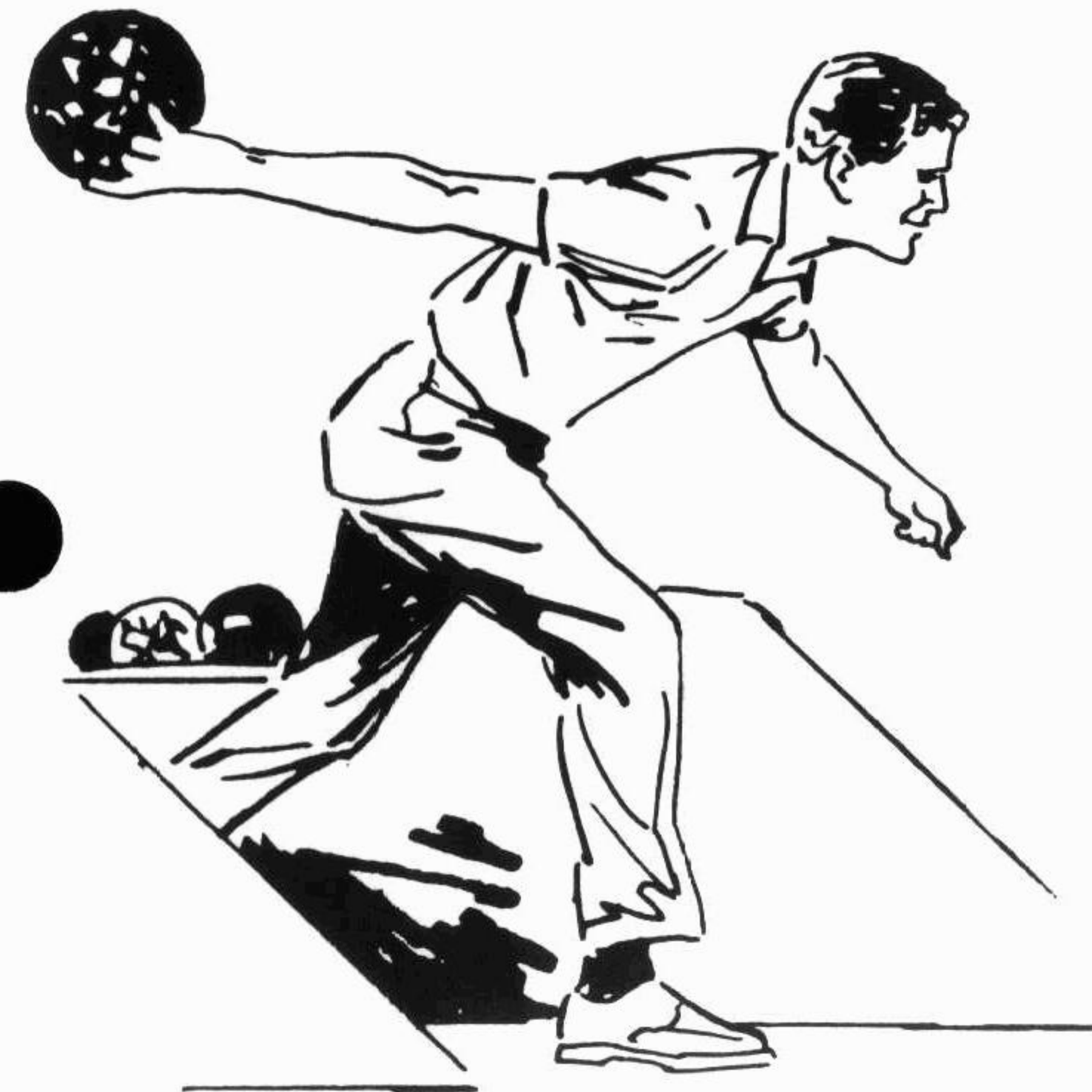
Familiar Faces in new places

Beverly Quist has been promoted to the position of supervisor on the third shift of Special Manufacturing. Before the promotion she was the assistant supervisor in Kit Packing. Beverly enjoys working with ceramics and painting.

The new supervisor in the Machine Shop is Mike Murphy. A resident of Canon City, Mike has worked for Estes Industries since January, 1968. His primary past time is working on cars.

Congratulations, Beverly and Mike, on the new positions.

BOWLING SEASON ON IT'S WAY



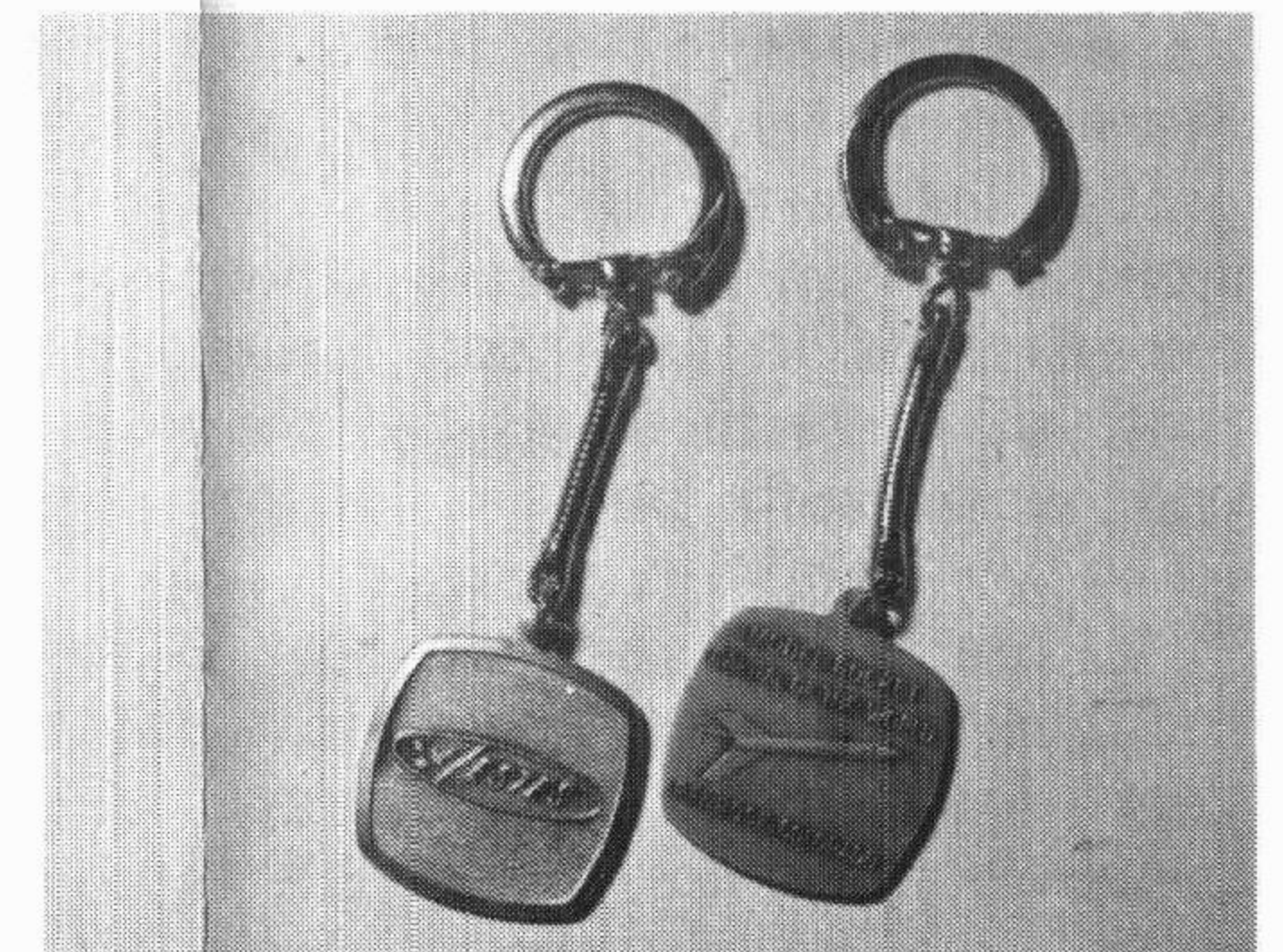
The fourth consecutive season for the Estes Mixed Bowling League is about to begin. Sponsored by Estes Industries, this special employee benefit gives everyone who likes to bowl a chance for a weekly evening of fun. Club fees are minimal.

If you are an avid bowler that wants to join, or you know of another interested fan (they don't have to work at Estes) call Avona O'Leary, the Secretary-Treasurer for 1969-70, at Ext. 0 or in the evenings at 275-7067. No partner? Call anyway. Someone else is sure to need a companion.

Help is desperately needed to organize the league and its teams for the coming year. Please call Avona, now.

ESTES KEY CHAIN NOW AVAILABLE

The Estes key chain is one of the new products now being sold in the Retail Sales Store. The Estes logo decorates one side of the medallion. The reverse side displays the Alpha model rocket. The unique key chain will retail for \$2.50, but all employees will receive a 40% discount.



W H O, S W H O



LINDA NOELL

Linda Noell, now in the Accounting Department, grew up in a railroad family. Until she was 16, Kremmling, Colorado was the family's home station. The high mountain town, noted for its cold winters, provided Linda and her brother Allan with numerous hills to climb and exciting places to explore while they were young.

During most of her school years, Linda attended Grand County Schools in Kremmling. She was very active, enjoying her classes and the people she attended school with. 4-H, Rainbow Girls, Pep Club and the National Honor Society were favorite organizations.

The railroad moved the Noell family to southern Colorado almost eight years ago. Linda has enjoyed living here. After graduating from Florence High School, she worked as a psychiatric technician at the State Hospital. "Two years as a group therapist and aide," Linda mentioned while talking about her experiences in nursing, "taught me that you have to be as patient when you work with people as you are when working with animals."

Linda, who started at Estes Industries in June, 1967, is a three year veteran of the company. She began working for Oakie Six in the Mail room on the first shift. The

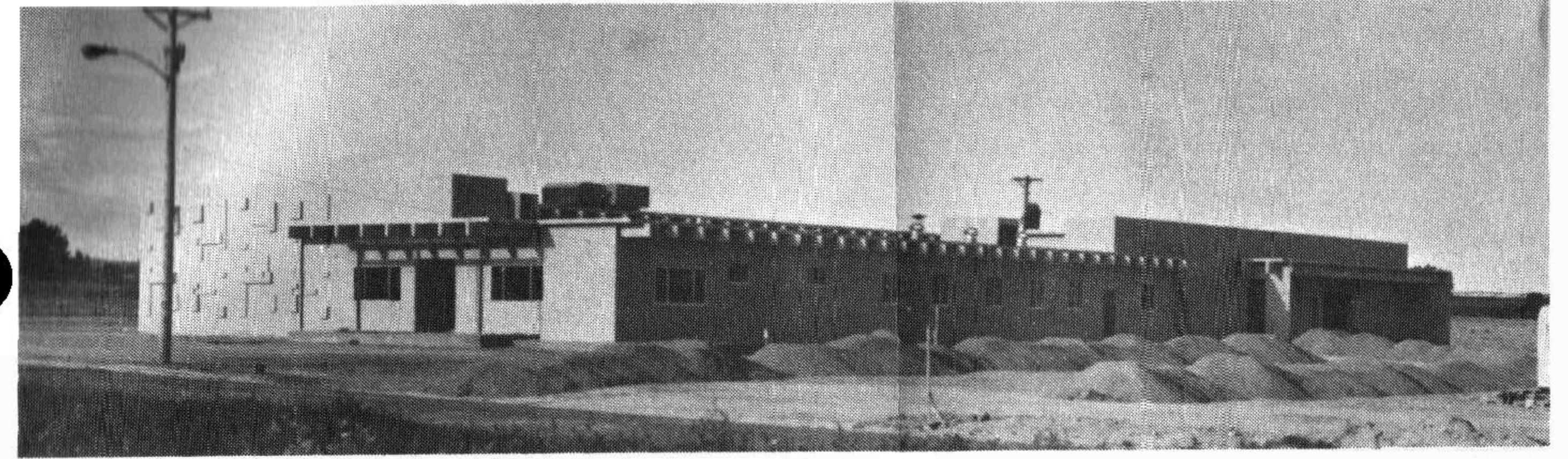
Mail Processing Department, which was located in the stock room in the present Kit Packing building, was a relatively small department at the time. When the hectic move to the new administration building came, Linda helped organize the new filing system.

The transfer to the Accounting Department eight months ago was almost accidental. When one of the accounting clerks was ill for an extended length of time, Linda was transferred temporarily. Later because of departmental growth, the transfer became permanent. Prompted by her position in the department and a desire to learn more, Linda started a correspondence course in accounting.

Recently Linda received a promotion to Accounts Receivable. "It is an interesting position," Linda commented. "I work with hobby shop accounts all over the world." Some of her correspondence goes to Canada, Puerto Rico, Samoan Islands, Belgium and France.

Congratulations, Linda, on your new position.

WINNING NAME ANNOUNCED



Hurray! The new building, now nearing completion, has finally received a name. The winning name in the Name-the-Building Contest is "K & W Building". Don Heberly who submitted the winning title is donating the \$10 prize toward a giveaway gift for the picnic.

The catchy title incorporates the names of the two departments that will move into the building: the Kit Packing Department and the Wood Shop. It also indicates the areas they will occupy. The department on

the northwest corner of the building will be Kit Packing. The Wood Shop will be centrally located, with warehouse space in the rear.

A special thanks to everyone who participated in the contest. The decision for the K & W Building was a difficult one to reach. Some of the other names submitted were: the Production Building, Tranquility Base, Pinocchio's Pad, the Balsa Bungalow, Rocket Ranch and Kit Packin' Woody.

EMPLOYEES' TOURS STARTING

Tours through Estes are commonplace. But wait, aren't those faces familiar? Employees in departments throughout the plant have been surprised recently to see their co-workers touring the company facilities.

Conducted by the Personnel Department, the tours give each new employee a chance to know how his

department works in cooperation with the others to produce an excellent product. "We hope to be able to take all the new employees on the tour during this month," stated Chuck Helsel, Personnel Director. "Plans are also being made to continue the program as new personnel join the team" he said.

NEW EMPLOYEE

The welcome mat is out for Steven Ferrin who has recently joined the Visual Graphics department. Originally from Carbondale, Colorado, Steve is now making his home in Canon City. Swimming, hiking and fishing are some of his favorite activities.