

POWER TECHNOLOGY

Power Technology is the latest school area to "discover" model rocketry. While Industrial Arts teachers have requested information about model rocketry occasionally in the past, there is currently a marked increase in requests from teachers in this area.

Western Michigan University at Kalamazoo, Michigan, invited our participation in their Power Technology Institute for Industrial Arts Teachers. Bob Cannon and Norm Avery gave a full day presentation about model rocketry.

The primary interests of the Institute members were in static testing of our engines and in the safety aspects of model rocketry. The twenty-two teachers attending the Institute, as well as their professors, were quite enthusiastic. Each one was given an opportunity to actually make a static test of one of our engines.

The old static test stand was specially "spruced up" (cleaned and painted) by Ed Brown for the occasion. Ed cut off its base and, with the help of the Shipping Department, crated it up for its first trip away from home.

Ed Brown and Delbert Buchanan gave Bob Cannon a "speed course" in the use of both the old and the new engine static test stands. Their thorough briefing was very helpful to Bob in answering questions asked by the teachers.

Several demonstration launches afterward brought forth comments by many teachers indicating that they planned for their classes next fall to build and fly model rockets as well as to make and use static test stands as part of the Power Technology area of their courses.



An old man was sitting on the porch of a little village store when a big shiny car drove up with two strangers in it. "Hey, grandpa," one of them called out derisively, "how long has this burg been dead?"

The old man looked at them carefully over the rim of his spectacles before he replied: "Not long, I guess, you're the first buzzards I have seen."

-- Quote Magazine

THE LAUNCH PAD
published bi-weekly
by
ESTES INDUSTRIES
Penrose, Colorado

the

ESTES

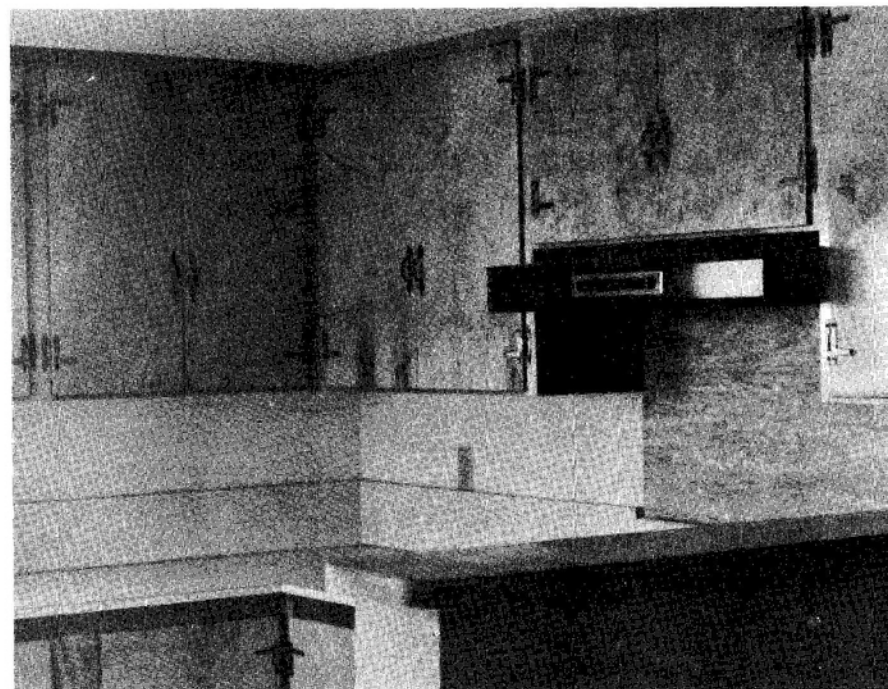
LAUNCH
PAD

JULY 26, 1968

What?

Where?

Why?



See story on next page. . .

Do you recognize this room? It is the new kitchen viewed from the dining area in the original office building of Estes Industries. This building is being transformed into a spacious three-bedroom home. Paul Nachman and Ray Stanford, two new employees, will be living in the house for the rest of the summer. Definite plans for its use beyond that time have not been finalized.

This room has quite a history. Employees who have been with the company for several years will remember when the entire shipping operation was performed here. Later it became an office, then the Mail Room, then an office again. The small dining room originally was a "catch all" and the packing area.

It is significant that seven years ago, last week, Art Hunter became the first local person employed by Estes Industries. His first duties were the building of a machine

shop and a wood shop. A year later he and another carpenter added the brick wing on the old office building. Art and Floyd Phillips have been doing the most recent remodeling job.



Art Hunter places tile on the bathroom wall in the old office building.

HAPPY BIRTHDAY

June Knight	July 28
Dianna White	July 29
Dan Mathis	July 30
John Zamparelli	July 31
June Harris	August 1
Peggy Apple	August 5
Bob Ownbey	August 7
Verdina Trautman	August 8

COMPANY PICNIC

Volunteers are needed to help plan the sixth annual company picnic. It's a big family affair to be held in September. If you would like to be a member of the entertainment committee, the food committee or the clean-up committee contact your supervisor or Gleda.



WELCOME

NEW EMPLOYEES

Eight new employees have joined us here at Estes during the period, July 6 through July 20. Welcome to *Dora Burgess, Cathryn Donley, Mike Jones, Ruth Mead, Paul Nachman, Bonnelle Schmidt, Sue Shore and Richard Wolf*. We're sorry we were unable to visit with you this week and thus introduce you properly in the Launch Pad. We'll plan on this in the near future.

WHO'S WHO

Barbara Stump joined the workforce here at Estes three years ago. She began as a shipper in the garage building best known as the club house. There were two shifts of shippers at that time. Barbara was one of five on the late shift.

Spending her earlier years here in Penrose, Barbara learned quickly the art of housekeeping and cooking. When her father passed away she helped her mother shoulder the responsibility of providing a pleasant home for the family which included three brothers. They lived on a small ranch, later moving to Divide, Woodland Park and Hotchkiss.

Before returning to this area Barbara spent three years in Oregon. She now makes her home in Canon City.

When Barbara had more time she liked to draw as a spare time activity. Today she finds pleasure in hiking and fishing. She indicates that her cat, Tiger, enjoys the luxury of being the spoiled member of the family.

Barbara still works as a member of the Shipping crew. The quietness of the graveyard hours suits her fine. Her duties include a variety of activities, but Barbara especially enjoys filling orders for the kids.



Larry Reagan launches his Apogee II rocket, completing another step in the employee rocket-building program. If you are interested in the program, contact your supervisor for details.

“Thanks in advance for your help.” These are the words that prompt the gals in the Rocketeer Mail department to dig through pages of misspelled words, illegible handwriting and vague descriptions to find the reason for a rocketeer’s letter. “Sometimes we feel like the Dear Abby’s of Estes Industries,” is the way Carlene Braswell puts it.

The Rocketeer Mail and Customer Service departments both are concerned with answering customer mail. However, while Customer Service deals primarily with letters about orders and inquiries related to orders, Rocketeer Mail handles a wide variety of letters covering the entire field of model rocketry. As the age, background, knowledge



Arlene Wheeler, supervisor of Rocketeer Mail, discusses a rocketeer’s question with two new members of the department,

Ruth Mead and Paddy Dawkins. Dolly Baker, regular letter writer, is absent because of a prolonged illness.

and interest of our rocketeers varies, so the types of questions differ. The gals pushing the pens in this department are called upon to answer questions from a simple “Where is my new catalog?” to queries on advanced calculus. A piece of incoming correspondence may be in the scrawling handwriting of a very new rocketeer, or it may be the carefully typewritten communication of an experienced adult modeler. It may bear the marks of a youngster barely learning to write, or the language of the letter may clearly indicate that it is the work of an advanced college student.



Every rocketeer receives a personal answer. While some letters can be handled with a brief acknowledgement, explanation or (occasionally) apology, others require more time, research and detail. The writers in the Rocketeer Mail department do their best to answer any conceivable question about model rocketry. Help with rocket construction and ignition problems is offered. Praise for an exceptional science fair project or rocket design is given. Sometimes members of this crew find it necessary to give a gentle admonishment for a broken safety rule.

Arlene Wheeler, supervisor, commends her gals for their thorough

knowledge of model rocketry and their ability to find the answers. Our technical reports, issues of the Model Rocket News and other literature are often their sources of information. However, the rocketeers also come up with many highly technical questions which require the department to call upon experts for help. Rocketeer Mail quickly turns to our research and development people or other departments which might have specialized information on the questions. Because Estes Industries is a customer-oriented organization anyone contacted for information gives willingly of his “know how” so that Rocketeer Mail can give correct and complete answers.

Currently, the department writes 90 to 100 letters per day. This volume varies and increases sharply following the publication of a new catalog or a new issue of the Model Rocket News.

Also included in the Rocketeer Mail department is the Friden. This machine utilizes punched paper tapes to produce letters. Tapes are made by typing the necessary material with the “punch” unit in operation. Once a letter-perfect tape has been made it can be used numerous times for reproduction of the same letter.



Kathy Berry describes the operation of the Friden to Anna Campbell, a new member of the department.

Tape letters include a club letter for rocketeers outlining materials and services available to organized groups, a safety factor letter explaining the safety values and safety record of model rocketry, ignition letters detailing methods of locating and overcoming causes of ignition failure, and basement bomber tapes explaining the dangers of attempting to compound and load fuel. These are a few recurring questions which, in many cases, may be given a standard answer. The vast majority of letters, however, are too varied to be handled by taped letter.

Instead, the primary function of the Friden is the production of "taped" letters to educators. These letters are "personalized" replies to inquiries from teachers. The


appropriate educator tape is included with each "educator packet". This section of the department works under the direction of our Education Director in the sending of these letters.

The greatest reward the Rocketeer Mail gals have is the satisfaction of knowing that in some small way they have helped young rocketeers come a little closer to the fulfillment of their hopes, ambitions and dreams. It is most thrilling to receive a letter such as this one: "...Your handwritten memos to Fritz are eagerly opened and read, and saved for re-reading. As parents that do a great deal of business by mail, and receive form letters by the bundle, your personal touch is exactly what we like to see, especially for an interested child."

TAXPAYER'S PSALM

- 1) *The State is my shepherd, I shall not want.*
- 2) *It maketh me to pay many taxes so it can keep me in my old age.*
- 3) *It taketh my earning; it reacheth into my bank account for its solvency's sake.*
- 4) *Yea, though I struggle with reports unto the dead of night, I will not catch up; for they are with me always, their penalties discomfort me.*
- 5) *It has obliged me to conduct my business in the presence of its agents; it fills my files with forms; my funds runneth out.*
- 6) *Surely, its rules and regulations shall follow me all the days of my life, and I may dwell in the big house of my Uncle forever.*

... FROM ROCKETEER MAIL ...



Dear Estes Co, I
Like your idea about
a model rockets. I would
enjoy shooting off
your rockets. so I
have decided to
join this idea. as
one of your official
rocketeers I'll be able
to squeeze the fun out of life.

