

HOLIDAY POLICY

Happy Thanksgiving, next week. According to our policy, all qualifying employees are entitled to four paid holidays, each year—one being Thanksgiving Day.

“To qualify for holiday pay, an employee must be a full-time in-plant worker and must have been employed for at least 90 consecutive days prior to the holiday. In addition, an employee must work a full shift on his last regularly scheduled workday *preceding* the holiday and on his first regularly scheduled workday *following* the holiday to receive holiday pay.”

If there are any questions about the policy, please refer to your policy statement or ask your supervisor .

Enjoy the holiday, eat well and give our regards to your families.

A NOTE FROM . . . GLEDA

This year we will have a *Holiday Party . . .* December 30th at the Club Paradise. Why so late? Hopefully it will be after the main Christmas rush, so all of us will be able to attend .

Volunteers will be needed for the entertainment and decoration committees. If you would like to help, please call or see me before December 3rd and we'll set up the time and date for the two committees to meet and discuss the details .



THE



LAUNCH PAD



PUBLISHED BI-WEEKLY

BY THE PUBLIC RELATIONS DEPARTMENT

NOVEMBER 17, 1967

WHO'S WHO

Art Hunter enjoys the title of general maintenance engineer. This means he is carpenter, plumber, painter, mason, and chief “fix it” man. Art has been with the company since July 1961—longer than any other employee. He built the print shop, the original shipping building, the east wing of office #1, the woodshop, and the machine shop. Also he has laid water lines, dug the cistern, done most of the block work, put in most of the sidewalk and worked on many other lesser constructional projects around the plant. *Hats off to Art Hunter!*

HAPPY BIRTHDAY

- | | |
|------------------------|----------------|
| <i>Terry Harris</i> | <i>Nov. 18</i> |
| <i>Fred Cooley</i> | <i>Nov. 20</i> |
| <i>Jean Fowler</i> | <i>Nov. 22</i> |
| <i>Floss Willie</i> | <i>Nov. 24</i> |
| <i>Judy Gates</i> | <i>Nov. 27</i> |
| <i>Phyllis Oldaker</i> | <i>Nov. 28</i> |
| <i>Dan Cornella</i> | <i>Nov. 28</i> |



“Thanksgiving Day is only our annual time for saying grace at the table of eternal goodness.” James M. Ludlow



See story on the next page. . .

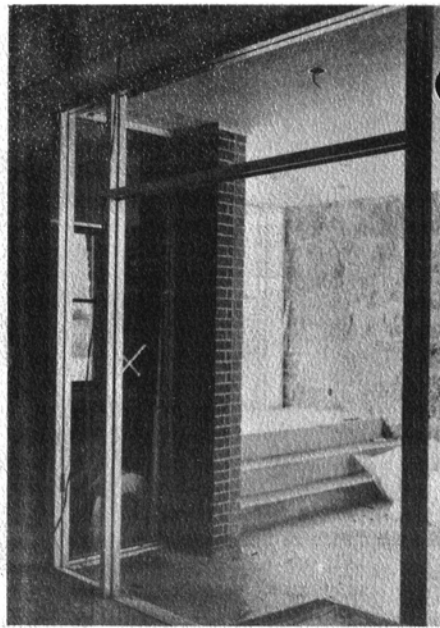
Estes Industries is now a freight agent for the *Continental Trailways Bus Company*. Until recently, parcels sent by bus had to be hauled into the Florence terminal. Now the bus comes by the plant twice a day, six days a week, to pick up and deliver packages.

Many shipments to dealers go by bus because there is no limitation on the number of engines in a package, and larger packages can be sent at a more reasonable cost. We are now serving as the *Continental* freight agent for the entire Penrose area.

PERSONAL GLIMPSES

Wanda Gifford of the shipping dept., reports that her daughter, *Elaine*, is recovering from surgery.

Bonnie Allen, new office employee, is a grandmother for the ninth time. Her grandson, *Kevin*, lives in Washington.



Happiness is not a destination...but a daily way of travel.

U.S. SCORES TWO SPACE TRIUMPHS

The United States scored two major successes in space, last week, putting itself firmly back into the race to land men on the moon.

U.S. scientists successfully fired the Saturn V booster, the most powerful rocket ever launched, and then successfully recovered its payload, the Apollo space-craft, from a landing spot in the Pacific Ocean. President Johnson summed it up: "We can launch and bring back safely the spaceship that will take men to the moon."

In another near-perfect space venture the Surveyer 6 spacecraft made a soft landing on the moon's surface and began sending back televised pictures of the roughest terrain yet photographed in the U.S. moon-scouting program.

Earlier this year, America suffered setbacks in its space program which caused some critics to call for drastic curtailment of this activity. These re-

cent successes have bolstered the confidence of those who realize the tremendous values to be gained from space exploration and conquest.

In turn, the continued interest of adults in a space program will generate enthusiasm for it in the hearts and minds of the youth of the country. Model rocketry has been one of the chief ways that young people have been able to express this enthusiasm. It is rather obvious what this can mean to Estes Industries and its employees.

WELCOME NEW EMPLOYEES

Bonnie Allen—Canon City—Office, Day shift—Married. Hobbies: Writing and pen painting.

Dolly Baker—Canon City—Woodshop, Swing shift—two children. Hobbies: Collecting western American artifacts and hunting arrowheads.

WHY SO LONG?

"When will moving day be?" Few days go by now when this question is not asked about the new building. It is a valid question and one which is on most of our minds. It is one, however, which no one can answer.

We could guess, but we don't wish to be disappointed, again. Remember the statement which appeared in the *Launch Pad* under the picture of the new building, June 3, 1966—18 months ago? It went like this: "Plans are under way to have us in our new facility before winter." Three months later the *Launch Pad* reported: "Wednesday afternoon, the contract was signed for the new Estes Complex...and should be completed by mid-winter or early spring." Those statements were made prior to last winter. Consequently, we are a bit hesitant about making predictions.

Actually, there have been many reasons for the delay. It took longer than expected to finalize plans for the build-

ing. Growth of business has meant alteration of plans. The foundation froze before it was cured, making it necessary to start over. There has been some difficulty in co-ordinating the work of the various sub-contractors. A number of the builders have gotten right "with it", while it appears that some have taken an "I could care less" attitude.

It also should be noted that some things have been added to the original plans for the benefit of all employees. The automatic sprinkler system for fire protection is a prime example. Also, we want a building which will have adequate facilities, excellent construction and be completely serviceable. It takes a great deal of time to obtain such goals.

So, let's continue to be patient. It is rather like the space program. The space-engineers who looked ahead, in spite of the setbacks and disappointments, were rewarded with that beautiful and successful flight of Saturn V, last week. *One of these days...*

