

NEW EMPLOYEES

Janice Roetker - Canon - mail room, day shift

Three children -- Hobbies: rockhound

Virginia Hadley - Canon - shipping, graveyard

Two children -- Hobbies: horseback riding

Joyce Sartor - Canon - mail room, graveyard

Hobbies: sewing, cooking, riding, swimming

Wilma Brill - Penrose - shipping, swing shift

Five children -- Hobbies: horses, reading

Kathy Berry - Canon - receptionist, day shift

Hobbies: sewing, gardening, swimming

. . . It is indeed a pleasure to welcome these new ladies as full-fledged members of the crew.

Congratulations, Vern and Gleda! Have an extra happy 16th wedding anniversary on the 16th.



Rosa Boyd	7	
Sharon Green	7	Happy
Sharon McWilliams	16	MAY
Juanita Seal	16	Birthday

We apologize to Bessie Ferkel for failing to mention the date of her birthday -- April 30.

Irene Woolsey was happily reunited, this week, with her cousin from Tucson, Arizona. Twenty years had elapsed since they had seen each other.

THE

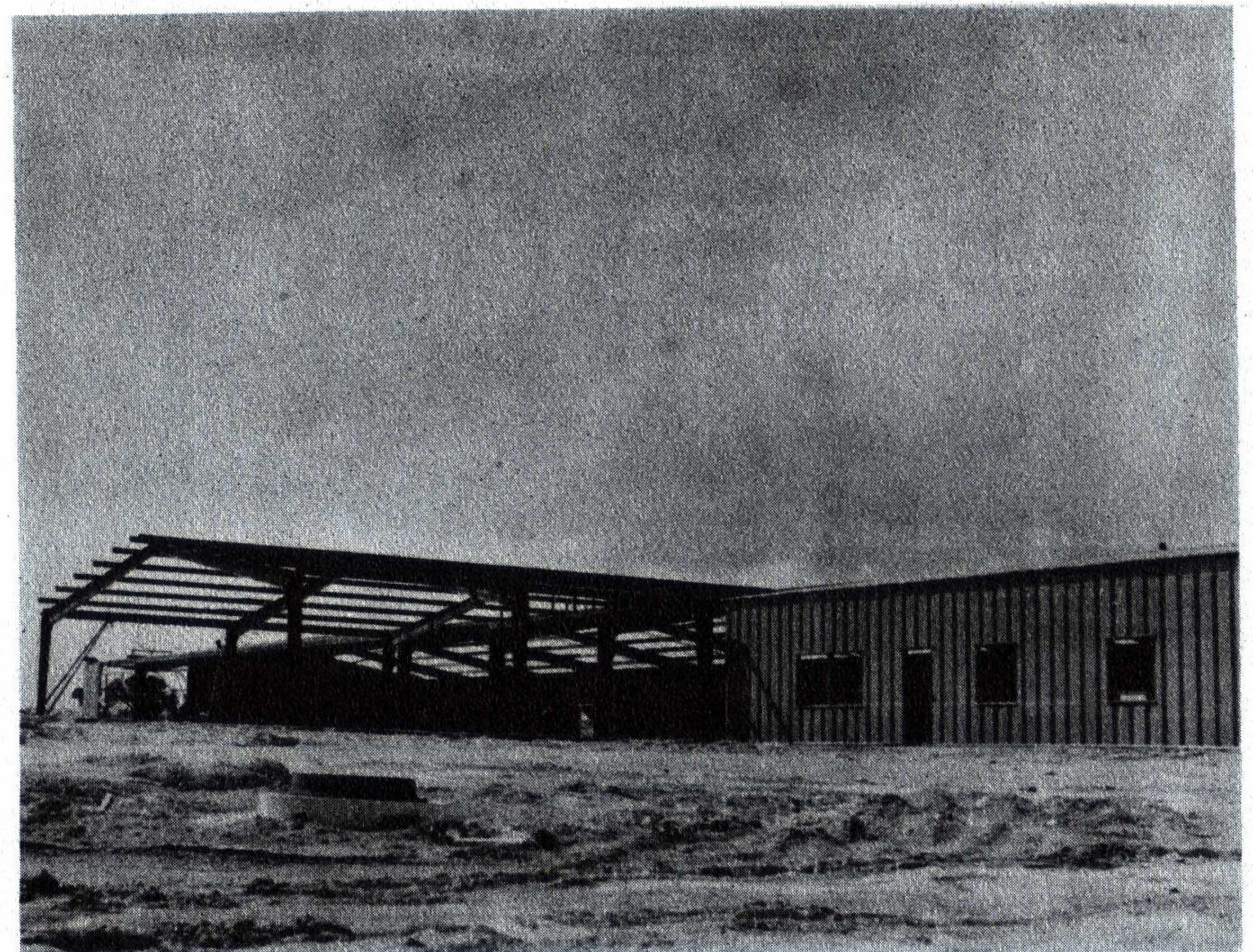
ESTES

LAUNCH PAD

PUBLISHED BI-WEEKLY

BY THE PUBLIC RELATIONS DEPARTMENT

MAY 5, 1967



Progress

SATURNALIA ! ! !

OH-h, she streaks through the air with the
greatest of ease,
Such grace and control you seldom will see.
She soars like a bird and dives like a brick -
A 'mini' length model in one easy trick.

In case you are wondering, our poetic friend
is referring to the ill-fated flight of our Saturn
1B.

EMBARRASING MOMENT

Mr. X, an Estes employee from Canon City,
purchased a pick-up truck, recently. On the
day of the purchase, he discovered that he had
left his check book at home. Consequently, he
used a counter check to pay for the vehicle. A
slight problem developed, however. The check
happened to be for the bank in Florence rather
than for his bank in Canon City. Fortunately,
the whole mistake was squared away before Mr.
X was placed behind the walls at the west edge
of the city.

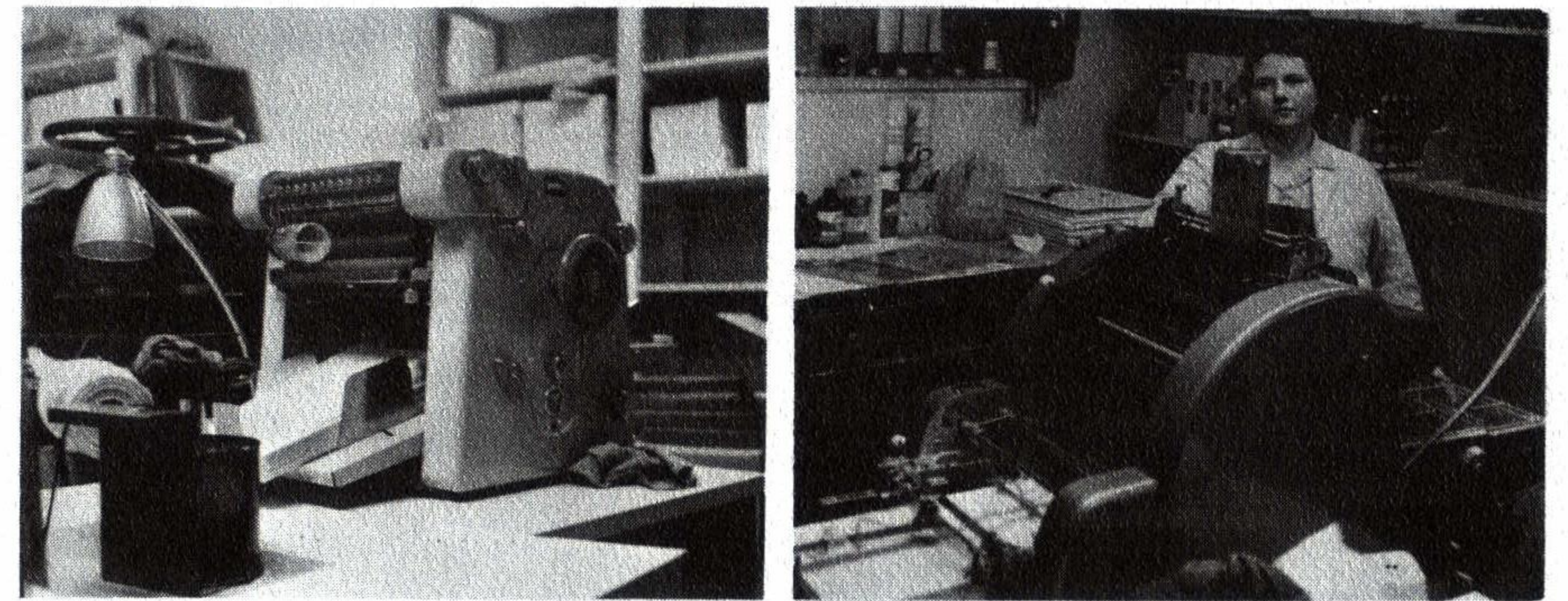
SPECIAL OFFER . . . continued

The contest to design a badge for customers
of Estes and the contest to design a badge for
employees of Estes are being continued to May
15. We would certainly appreciate some more
creative ideas from you employees.

Let it be known that on the 24th day of April
1967, at approximately 1:45 p. m., a launched
model rocket made a direct hit on the antenna
mast, atop the office building.

J. Wellington Sneezeweed, Esq.

T H E P R I N T S H O P



Technical Reports, the Launch Pad, issues of
the Model Rocket News, rocket instructions, the
design booklet, and other literature -- where are
they printed?

Actually most of the literature published by
Estes Industries is printed in our own print shop.
The catalog is the only major publication done
elsewhere.

There are two offset presses in the shop. With
these machines, material as small as 3" x 5" cards
or as large as 11" x 17" sheets can be printed. A
minimum of 40,000 sheets on the small press and
50,000 sheets on the large press is the production
of a normal day.

The printed material is folded on the folding ma-
chine. It is capable of one, two, or three folds. On
a current MRN mailing, the machine is operated
around the clock.

The sheets of a publication, consisting of a num-
ber of pages, are coordinated in the collating room.
Here, they are collated, stapled, and trimmed. Ed-
ucational and library packets are also assembled in
this room.

Members of the print shop crew are: Gene Street,
supervisor; Jean Curnutte, assistant supervisor and
press operator; Elsa See, folder; and Beverly Pad-
gett, collator. They are a busy, but pleasant gang.