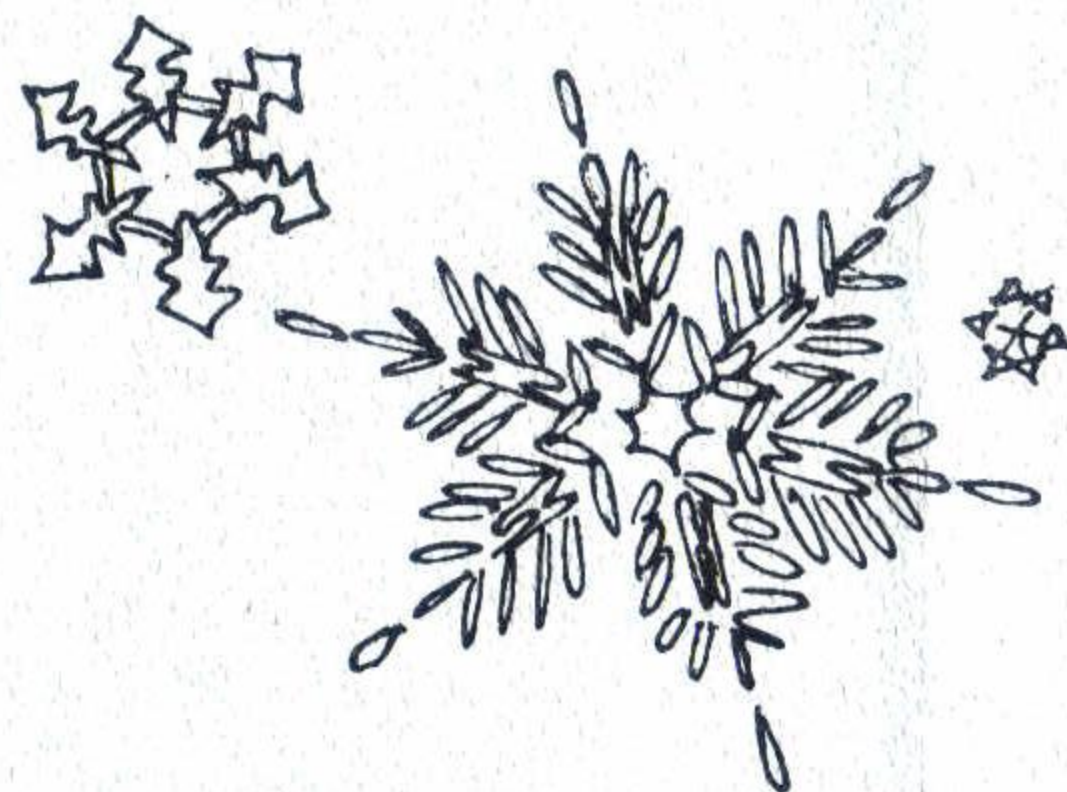


Oakie is back in the mail room again after a stay in the hospital and a longer stay at home. She wants to thank everyone for the cards, flowers, visits, and everything. WELCOME BACK, Oakie!

Helen Currin spent a few days in the hospital in traction and is happy to be back to work. She also wishes to thank her crew for the beautiful flowers.

Juanita Seal is out of the hospital now and looking good.

Ines Prelas, Dealer Sales, is sure excited! It seems that she has a habit of signing her Dad's name to contest entries of various types and accidentally won a trip to Disneyland for her parents, brother, and herself, courtesy of Pepsi Cola Company. She has promised to provide a story about their trip when they return.



Please return your Single Fund cards and donations to Gleda by the end of next week.

THE

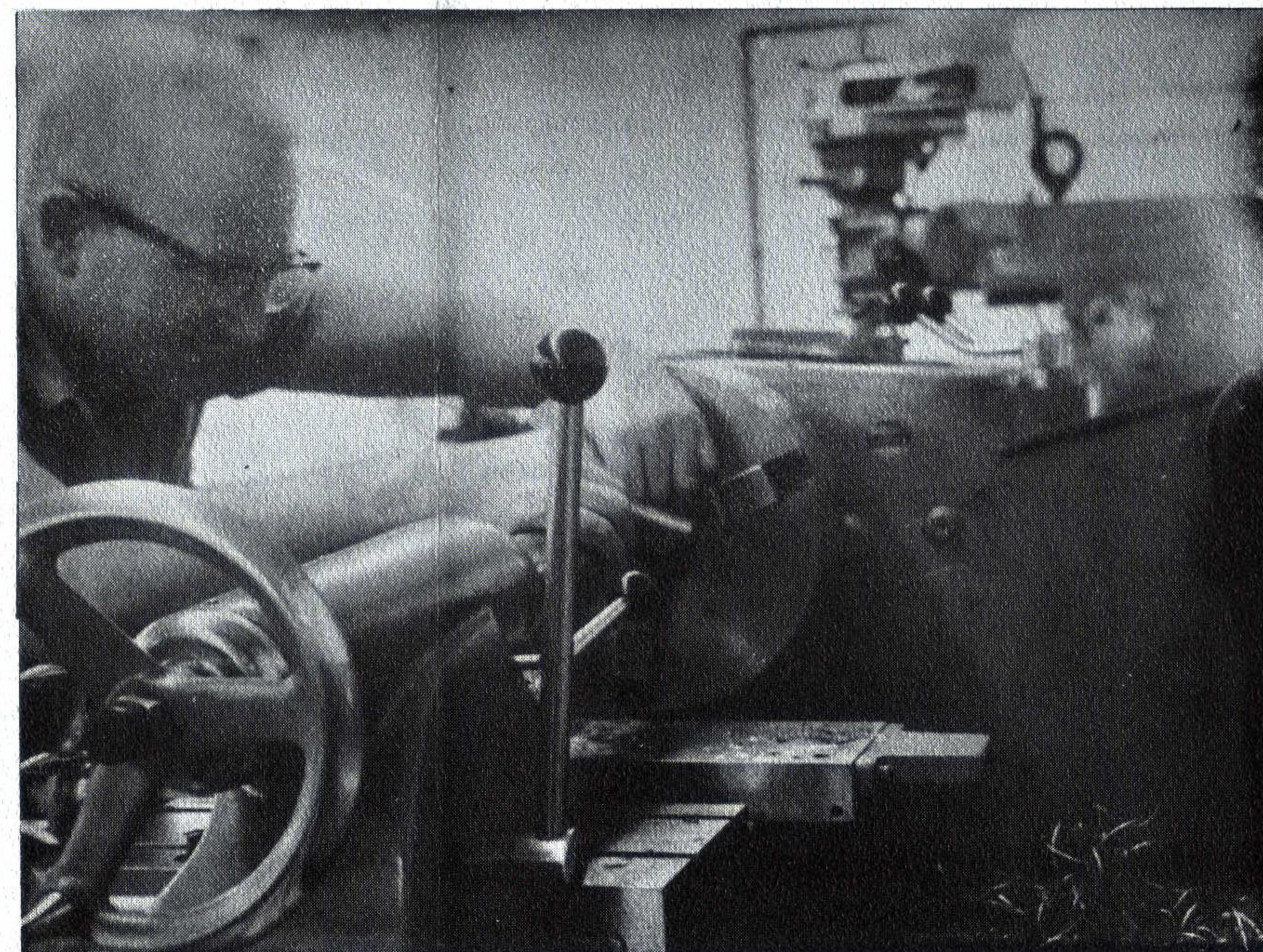
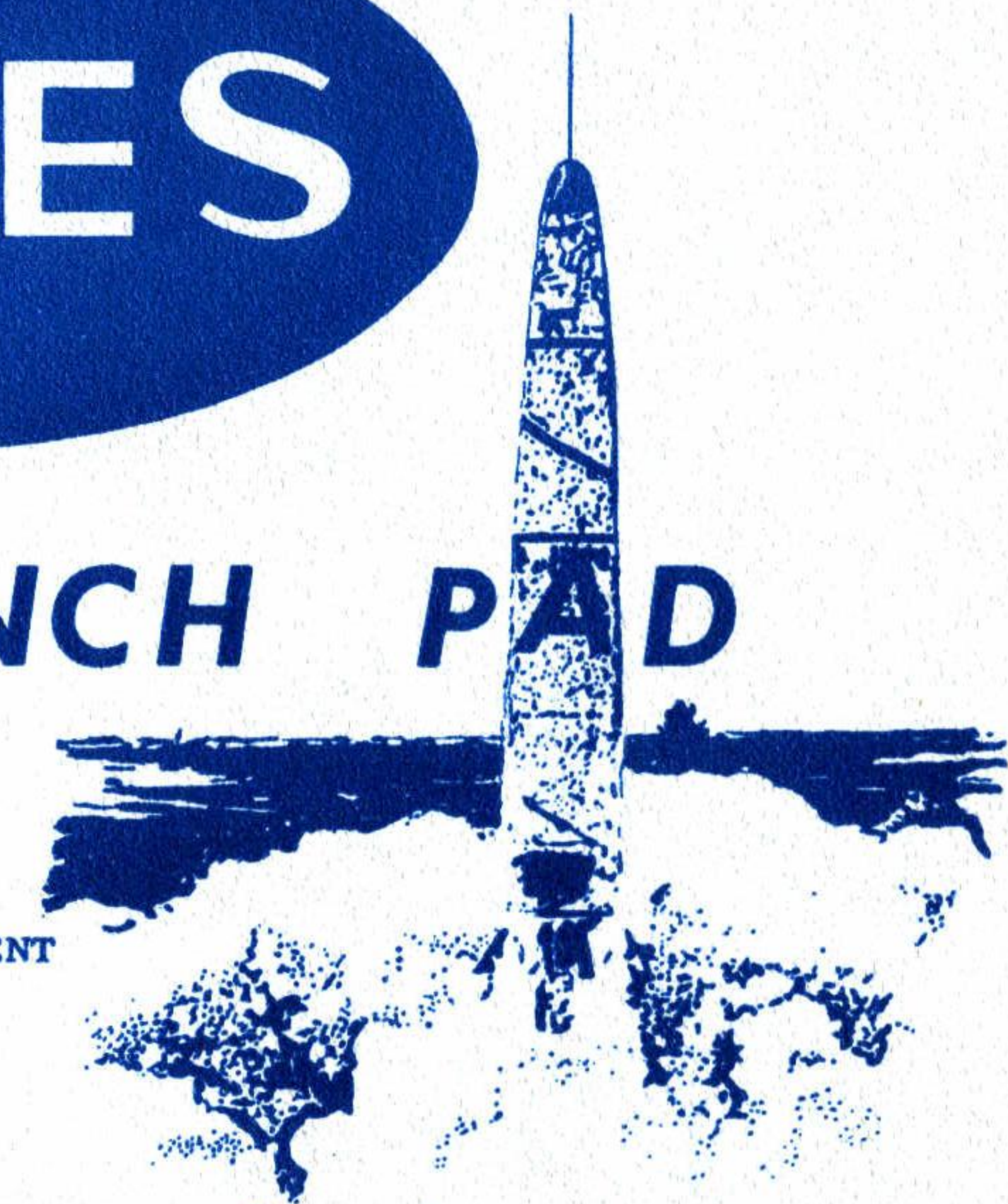
ESTES

LAUNCH PAD

PUBLISHED BI-WEEKLY

BY THE PUBLIC RELATIONS DEPARTMENT

December 2, 1966



Roy Burns - Machine Shop - story next page---

A tour of our busy industrial area . . .

Did you know that approximately 1200 nosecones are made per shift in the woodshop? Well, its true, so help me, Mary Poppins, it is! Ten persons work in the woodshop during the three shift working day. Nosecones are not the only product produced in this area of manufacturing.....let me tell you they turn out scads of stuff....Altiscopes cut to size, Tilt-A-Pad, ignitors, and wadding are manufactured;..... finstock and special sized body tubes are cut, launching rods are prepared, glue bottles filled, series III engines cut, final work done on the series II engines, and engine hook wire is bent and cut.

While we are in the manufacturing area at our plant, let's take a look at the engine production. Five people are responsible for the manufacturing of 25 different engines. Oh yes, and one somewhat fickle machine called Mable helps, too. The machine, when in the right mood, can turn out one engine approximately every 5 1/2 seconds, and in her life span, has turned out more than 5.000,000 model rocket engines.

In order for our tour to be complete, a stop must be made at the machine shop. The 5-man crew here has two important duties. They keep the present machines in running condition and help create new and better ones to replace older units, and machines to produce newly found products. The order of the day...to complete the new Mable as soon as possible.

Delbert's wife got carried away burning trash the other day. She not only finished off the trash, but the corrals and some old lumber. The word from her is that it is still mighty warm around the Buchanan household.

WELCOME - NEW EMPLOYEES

Rose Kerrigan and Kathy Buhrle have joined the shipping graveyard shift. Rose lives in Penrose with her two children. Her hobbies are reading and knitting. Kathy lives in Canon with her husband and three children. She enjoys fishing, hunting, knitting, and training--snakes?!!

Beverley Padgett has joined day crew in shipping. She is married, has four children, and enjoys piano and reading.

Two newcomers to the mail room day shift are Anita Thomas and Lillian Little. Anita, her husband, and their two children recently moved to Penrose. Her hobbies are sewing, knitting, crocheting, and cooking. Lillian, former home contractor, and husband, Maurice, live in Penrose.

Rosa May Boyd has joined the woodshop graveyard shift. She and her husband and two daughters live in Penrose. Her hobby is sewing.

Swing shift shipping crew welcomes Jean Shields, Maylene Noordam, and Pat Trogden. Jean is married, lives in Canon, and enjoys fishing, camping, and knitting. Maylene lives in Florence and loves sewing. Pat, her husband, and two children, live in Rockvale. Her hobbies are sewing and reading.

HAPPY BIRTHDAY to

Oakie Six Dec. 16

Sandra White Dec. 18



Our sympathy to Bertha Merris whose husband George passed away last week, and to Betsy Acton whose Grandmother passed away last week.